

» Sections for Sale  
\$345,000



## Marsden Valley, Stoke

LOT 32	325m <sup>2</sup>	\$350,000 (incl. GST)
LOT 34	330m <sup>2</sup>	\$345,000 (incl. GST)
LOT 35	335m <sup>2</sup>	\$345,000 (incl. GST)
LOT 42	1530m <sup>2</sup>	\$370,000 (incl. GST)
LOT 47	300m <sup>2</sup>	\$345,000 (incl. GST)

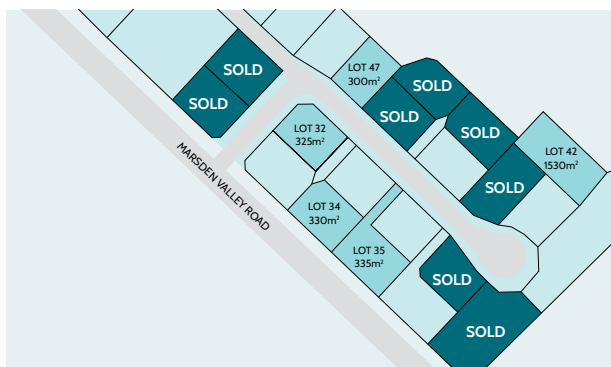
- Proven plan designs carefully chosen to make the most of each section
- Section prices starting from \$345,000 and house and land packages starting from \$705,000
- Titles due approximately February 2024

Situated in the tranquil Marsden Valley, perfectly positioned between Richmond and Nelson this great location offers the perfect blend of a rural outlook and convenient living.

Within 15 minutes you can find yourself in Richmond, Nelson CBD, or on the golf course by the airport, yet look out of the window and see the tree clad hills or open a window and hear the bird song in the valley – this truly is a special location.

Surrounded by quality, established homes this spot offers great opportunities for first home buyers, families, and investors with this being the first stage of many being brought to market.

With titles expected in early 2024, we have five packages available in Stage 1 which also contains a small commercial block with plans still to be released (completed by others). Section sizes range from 300m<sup>2</sup> up to 1,500m<sup>2</sup> with section prices starting at \$345,000 while available house and land packages start from \$705,000.

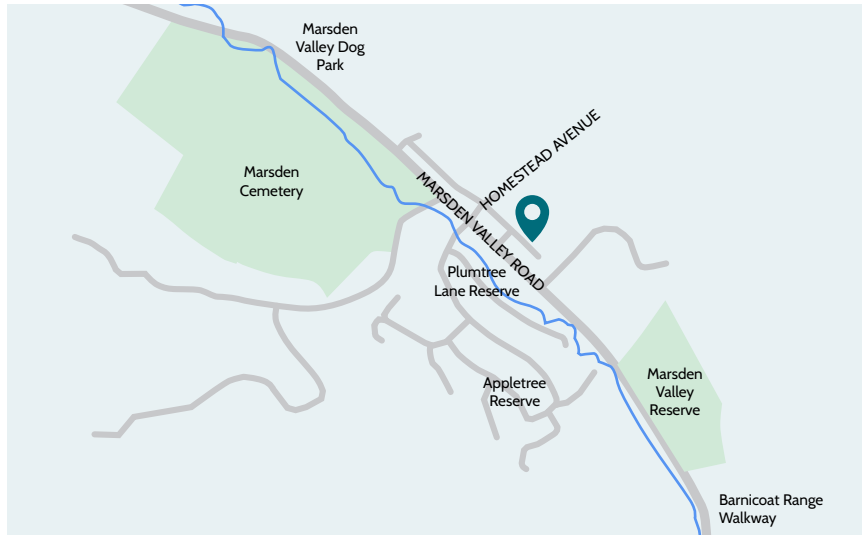


Milestone Homes Nelson Bays  
2 Estuary Place, Richmond

0800 MILESTONE  
03 543 8663

nelson@milestonehomes.co.nz  
 milestonehomes.co.nz

» Sections for Sale  
\$345,000

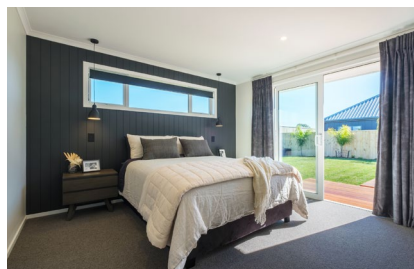


### Proud to be local builders using local suppliers

There is no better time to build and together with our local trades, we achieve great things for our clients.

See what some of our recent clients have to say about their experience:

» [milestonehomes.co.nz/locations/nelson](https://milestonehomes.co.nz/locations/nelson)



📍 Milestone Homes Nelson Bays  
2 Estuary Place, Richmond

📞 0800 MILESTONE  
03 543 8663

✉️ [nelson@milestonehomes.co.nz](mailto:nelson@milestonehomes.co.nz)  
🌐 [milestonehomes.co.nz](https://milestonehomes.co.nz)