

## » LIFESTYLE RANGE Milestone 20




 Style 1: Metal tile hip roof with plaster cladding



 Style 2: Metal tile gable roof with plaster and Linea cladding



 Style 3: Longrun hip roof with Linea and brick cladding

The Lifestyle range features 30 stylish home designs created by Milestone Homes to deliver comfortable, quality homes ideal for modern living. Functional and flexible, the cleverly designed Lifestyle range has a proven track record of happy homeowners from professional couples to large families.

## Milestone 20

This spacious, contemporary home plays host to four bedrooms and its designer kitchen is complemented by two highly functional living spaces, providing the scope and flexibility to suit every occasion.

The walk-through laundry and scullery are a huge bonus and only adds to the vast amount of storage that this home offers.

Including two bathrooms, there are plenty of distinctive features which contribute to the appeal of this home and make it the perfect choice to suit your family's changing needs and lifestyle.

### Highlights:

- Spacious master accompanied by a superbly appointed ensuite and a large walk-in-robe
- Option to transform into three-bedroom with a super-sized living area and alfresco space
- Internal access double garage.

187m<sup>2</sup>



Bedrooms



Bathrooms





Living / Dining



Garage



 0800 MILESTONE  
 [milestonehomes.co.nz](https://www.milestonehomes.co.nz)

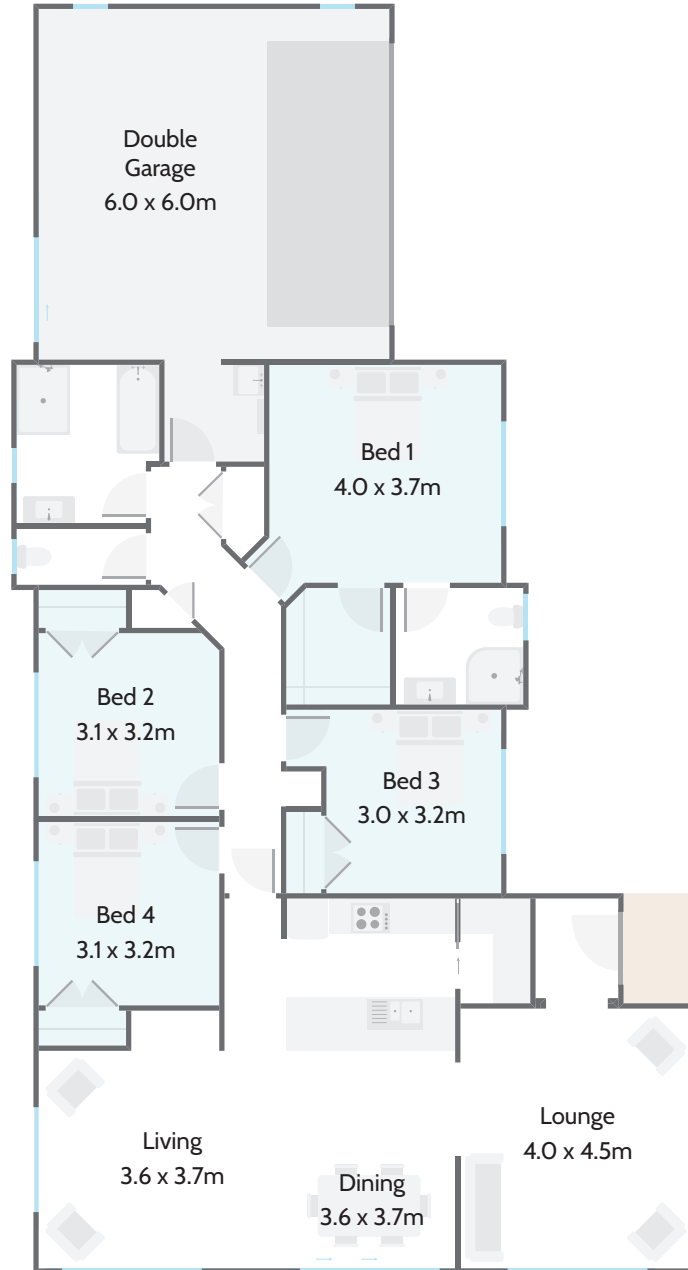
# » LIFESTYLE RANGE

## Milestone 20



Home Width	Home Length	Living Area	Garage Area	Total Floor Area
11.80m	21.80m	145.86m <sup>2</sup>	40.87m <sup>2</sup>	186.73m <sup>2</sup>

Measurements are reflective of Style 1



### Plan Options:

- 3 Bedroom and Alfresco Area

187m<sup>2</sup>



Bedrooms



Bathrooms



Living / Dining



Garage



0800 MILESTONE  
milestonehomes.co.nz