

» METRO RANGE Bryant



The Metro range features 10 contemporary home designs created by Milestone Homes to deliver modern living solutions for smaller urban sections. Compact yet packed with new-home comforts, Metro plans are a go-to for professional couples, young families and empty-nesters looking for relaxed, easy-care living.

Bryant

A smaller section need not be a barrier to building a new home where your family can enjoy the lifestyle you've dreamed of. With an efficiently designed layout under 10-metres wide, the Bryant home plan is the perfect solution for a narrow section without compromising on the essentials of modern living.

Comprising three bedrooms, two bathrooms and casual open plan living, the thoughtfully designed Bryant floorplan delivers a stylish, contemporary home within a compact footprint.

Highlights:

- Three generous double bedrooms
- Master bedroom with ensuite and walk-in wardrobe
- Open plan layout opening to outdoor living
- Work-from-home study nook
- Spacious internal access garaging.



135m²

Bedrooms

3

Bathrooms

2

Living / Dining

1

Garage

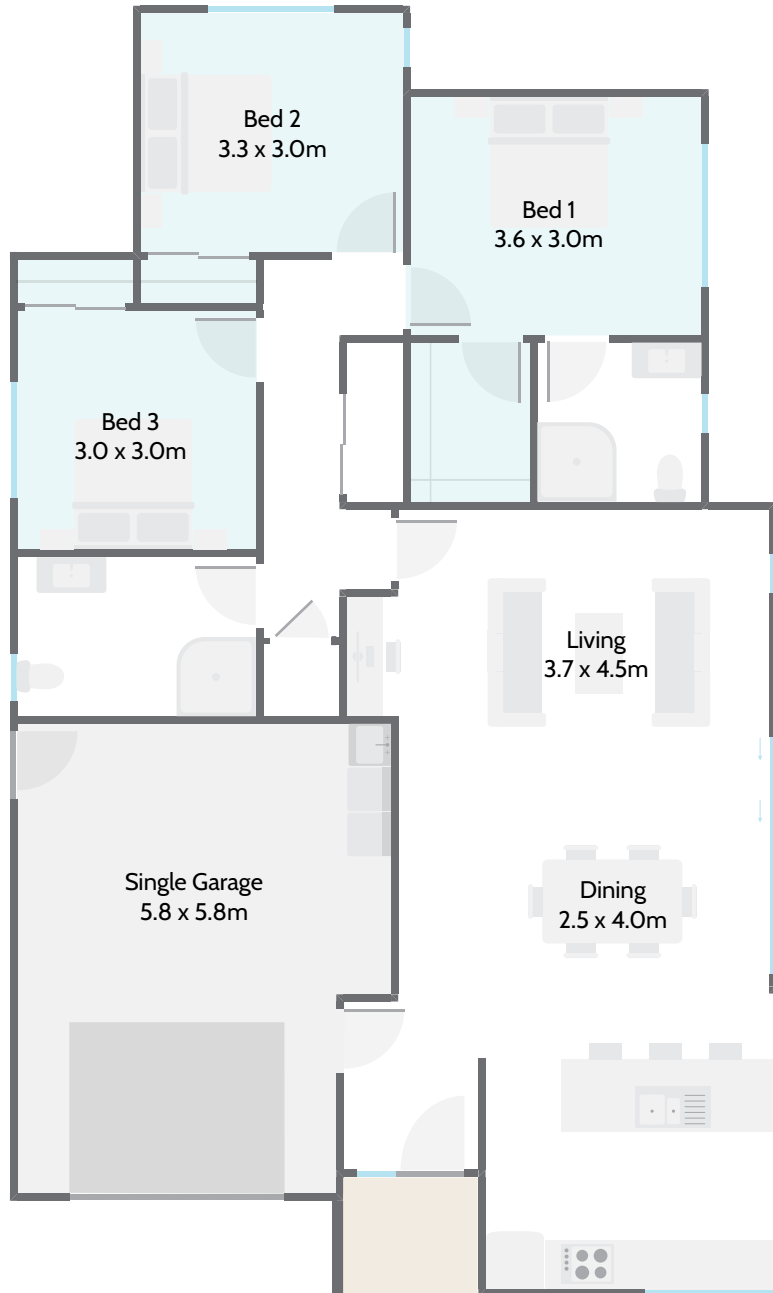
1

0800 MILESTONE
milestonehomes.co.nz

» METRO RANGE
Bryant



Home Width	Home Length	Living Area	Garage Area	Total Floor Area
9.80m	16.25m	108.59m ²	27.32m ²	135.91m ²



135m²



Bedrooms



Bathrooms



Living / Dining



Garage



0800 MILESTONE
milestonehomes.co.nz