



Homes to Inspire

Start your home building journey with an inspiring look through our nationwide show homes and award-winning builds.

Whenever you're ready, our teams are here for you.



8
Stroman
Avenue



Milestone Homes
will help you build
your dream.



Building a new home is an exciting, life changing event. You get to create a home that works perfectly for you, that's modern and comfortable, located just where you want to be. It truly is a milestone!



About Milestone Homes

At Milestone Homes we are committed to providing New Zealanders with high quality homes and a smooth, enjoyable building process. Since 2003 we've been hard at work carefully designing and crafting hundreds of homes around the country for all walks of life.

We pride ourselves on building practical, beautiful and highly resalable homes that meet market needs while providing an exceptional experience.

Our show home difference

Over 20 years we've come to understand the value of having high quality show homes that represent the true outcome our customers can expect.

When first setting out, it can be hard to imagine what your new home will look and feel like. Our show homes have been designed and built as actual homes. You can step inside and experience the welcoming feel of a Milestone home, observe the quality construction and finishings, and rest assured knowing that what you see is what you will get.

We put such a high importance on authentic show homes that we've created them all around New Zealand.

20 years of craftsmanship

For 20 years, we've been building homes that stand as testament to quality, innovation, and our customers' unique vision.



- **Tailored to you:** Every family is unique, and so is their dream home. Our teams work closely with you to understand your preferences, needs and lifestyle, to create a home that's truly yours.
- **Quality without compromise:** Our commitment to using the finest materials, coupled with a rigorous quality control process, guarantees that your Milestone home is an investment that will stand the test of time.
- **Innovation at heart:** Over the years we have embraced innovation, incorporating the latest technologies and sustainable practices to ensure your home is future-ready.
- **Community focus:** Building isn't just about structures, it's about fostering thriving communities. We take pride in using local tradespeople and contributing to local charities, so that we can make a positive difference in the neighbourhoods where our homes stand tall.
- **Built by Master Builders:** We understand that building a new home is a significant investment. That's why we're proud to offer the Master Build 10 Year Guarantee, safeguarding your journey to a remarkable home.

» Milestone Homes Matamata Show Home



Living made easy

Our Matamata show home is a quality family home that ticks all the boxes for effortless living. With two stunning living areas, four spacious bedrooms and two bathrooms, there's room for everyone to enjoy their own space.

The home has been styled in line with the latest contemporary trends, from subway tiles in the kitchen to dark, natural textures in the main bathroom. Completed to an exceptional standard of workmanship, this home exemplifies the Matamata team's attention to detail.

Milestone Homes Matamata Show Home

14 Hinerangi Crescent
Peakedale Estate, Matamata
Darlene 027 285 9251
matamata@milestonehomes.co.nz

» Milestone Homes Nelson Bays Show Home



Lifestyle Range: Milestone O5

Where style and comfort combine

This stunning show home has taken our ever-popular Milestone O5 plan and tweaked it to perfection. Positioned to maximise sun and offer views in three directions, it's a plan that works brilliantly for this picturesque region. Inside, discover open plan living, a generous lounge that can be closed off, three double bedrooms, two bathrooms and a separate toilet. Additional features include an attic, ensuite upgrade and attractive feature walls.

Milestone Homes Nelson Bays Show Home

52 Summersfield Boulevard
Richmond
03 543 8663
nelson@milestonehomes.co.nz

» Milestone Homes Marlborough Show Home



Made for Marlborough

Occupying a prime corner site, this prestigious 194m² home exudes luxury, light and style. The thoughtful layout has living areas on the north, separate to the more private bedroom area. The kitchen/living flows out to a covered alfresco, while a second outdoor living area oriented to the west soaks up the Marlborough evening sunshine. A cosy lounge, separate laundry, built-in storage, attic, and generous garaging complete this beautiful family home.

Milestone Homes Marlborough Show Home

43 Wai Iti Avenue
Redwoodtown, Blenheim
Hamish 022 097 9446
marlborough@milestonehomes.co.nz

» Milestone Homes Mid Canterbury Show Home



Lifestyle Range: Milestone 07

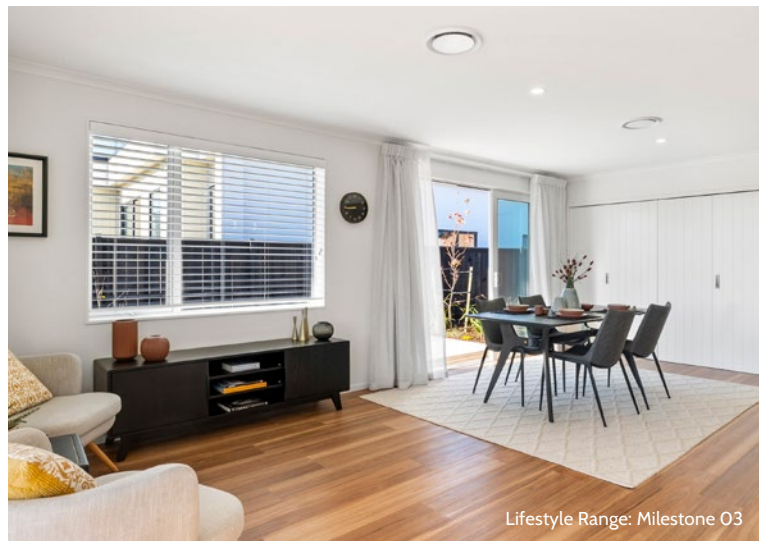
A natural beauty

With dazzling design touches, an intelligent layout and superb features, 8 Strowan Avenue presents 205m² of sheer delight. From its welcoming street frontage through to private alfresco seating area, this three bedroom, two bathroom home is brimming with features. Walk-in pantry, ebony kitchen tiles, built-in study nook, and separate laundry are just a few of the elements on offer here. An entertainer's dream, this home showcases the stunning effect you can achieve with a Milestone Home.

Milestone Homes Mid Canterbury Show Home

8 Strowan Avenue
Strowan Fields, Ashburton
Belinda 021 0257 2788
midcanterbury@milestonehomes.co.nz

» Milestone Homes Otago Show Home



Lifestyle Range: Milestone O3

Form, function, finesse

This 192m² show home is a stellar example of a family home that perfectly blends form and function. With extensive glazing and indoor-outdoor flow, the home invites the sunshine in and unites spaces seamlessly. Designed to utilise space effectively, the layout features three smartly arranged bedrooms, two bathrooms, a partitionable lounge, separate laundry and hidden study nook that can be closed away behind bi-fold doors. Best yet, the exceptional quality on display here is everything you can expect in your own Milestone home.

Milestone Homes Otago Show Home

6 Silverdale Place, Highland Park
Mosgiel

03 489 8111

otago@milestonehomes.co.nz



Peace of mind for your journey: Our Master Build 10-Year Guarantee

A new home build is one of the most significant investments you make in life. It's essential that you protect it with a Master Build 10-Year Guarantee. All Milestone Home franchisees are Registered Master Builders, meaning that when you build with us you receive this ultimate safeguard as part of the package.

What's covered?

The Master Build 10-year Guarantee provides the most comprehensive cover in the market. It provides cover for loss of deposit, non-completion and for structural defects, workmanship and materials for up to 10 years.

More than just peace of mind, building guarantees are now required by most mortgage lenders.

Only Registered Master Builders can offer you a Master Build 10-Year Guarantee.

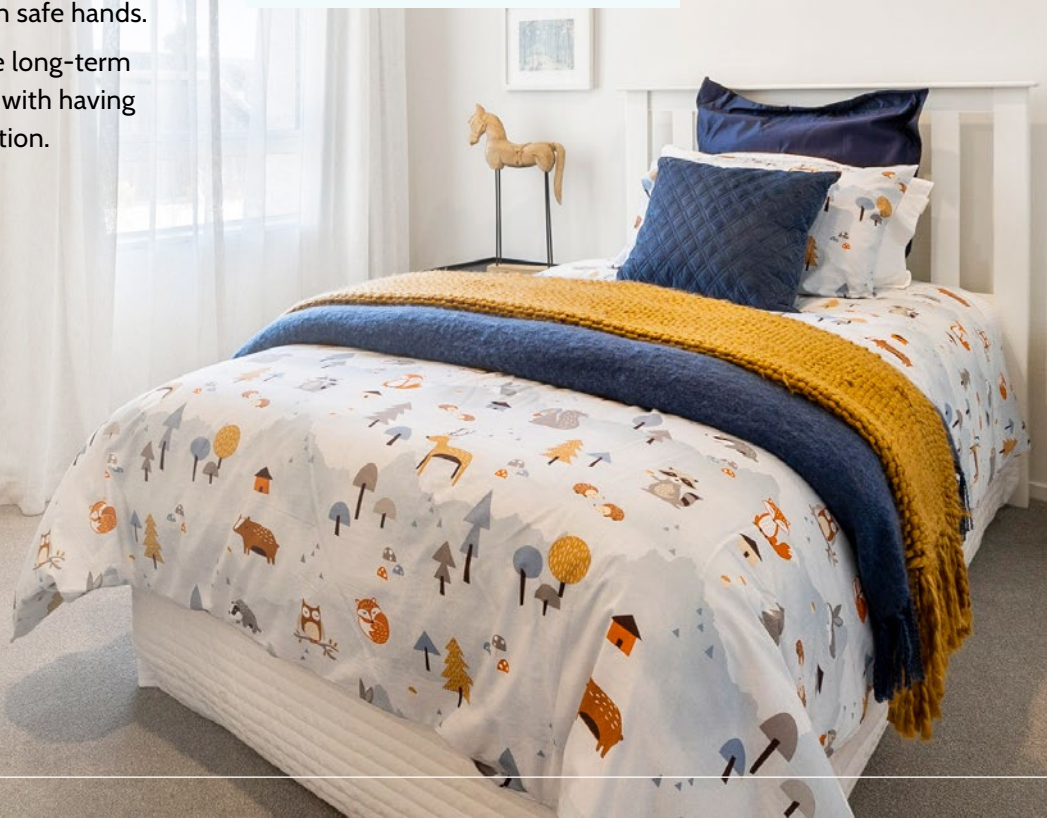
At Milestone Homes we stand behind the work we do. We also want to make your home building journey an enjoyable one, where you feel excited about the future and confident that you're in safe hands.

Build with us and enjoy the long-term peace of mind that comes with having this highest level of protection.

Registered Master Builders House of the Year Competition

Open only to Master Builders, this prestigious competition celebrates building excellence in New Zealand. It recognises the country's best homes and builders, and the craftsmanship behind them. Milestone Homes are incredibly proud to have won House of the Year awards for multiple years running, including a highly coveted Top 100 home award.

> Read on to discover our most recent award-winning homes from around the country.



» Milestone Homes Taranaki 2023



Lifestyle Range: Milestone 28

NEW HOME \$500,000 - \$750,000
REGIONAL SILVER AWARD



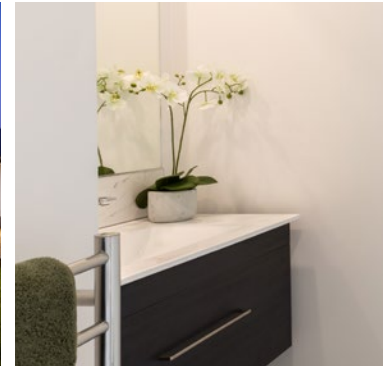
Inspired by light

A crisp white exterior opens up into a world of natural calm inside. The generous hallway invites people into the bright, airy space, while soft colours and natural furnishings provide a warm, welcoming feel. Clever use of space makes this home as practical as it is beautiful, with an office tucked away behind sliding doors and a second living area leading onto a sun-drenched wraparound deck. Underfloor heating, chic green-and-white tiles and a large rain shower in the master ensuite add to the appeal of this outstanding home.

Milestone Homes Taranaki

Milestone Homes Taranaki is headed up by Jody, Jordy and Cam—three Taranaki locals who are passionate about their region and love sharing it with others. Together, they're on a mission to help communities and people build stronger futures. Jody and her team take pride in providing grounded advice and unwavering support for their clients, who are always at the centre of everything they do.

» Milestone Homes Taranaki 2023



**NEW HOME UP TO \$500,000
REGIONAL BRONZE AWARD**



Milestone Homes Taranaki

The Milestone Homes Taranaki team love to help their clients create unique, stylish homes that stand out. From beautiful finishings to tailored design, they will work with you to create a home that's perfectly suited to your lifestyle. Tell the experienced team what inspires you, and they will offer on-trend, creative solutions to make your new build, yours!

Laid back living

This inspiring new home makes an immediate impression thanks to its high contrast cladding, angular landscaping and boardwalk-style covered entrance. The T-shaped layout amplifies the wow-factor, with dual-access sliders to a wraparound deck and covered outdoor zone making alfresco living always an option. Three bedrooms run off a storage-lined hallway, and a main bedroom with ensuite, walk-in wardrobe and sliding door make for comfortable everyday living. Impeccable construction and thoughtful finishing touches complete this picture-perfect Milestone home.

» Milestone Homes Mid Canterbury 2023



Lifestyle Range: Milestone 14

NEW HOME \$500,000 - \$750,000
REGIONAL SILVER AWARD



Milestone Homes Mid Canterbury

Husband and wife team, Steve and Belinda, are proud of everything they achieved for their clients. Working closely with the homeowners, the Mid Canterbury team optimised the home's layout to suit its rural site and the needs of the family. Constructed from quality materials to the finest standard of workmanship, this stunning home is an outstanding example of what Milestone Homes can achieve for you.

Expansive rural retreat

The majestic Southern Alps form the perfect backdrop for this outstanding 254sqm pavilion style home. A trio of gables make for a welcoming entrance, while complementary mixed cladding enhances its visual appeal. Inside, the three-bedroom house lives up to its exterior promise. A chic modern kitchen, lounge with pitched ceiling and seamless alfresco area make up the living wing, while the second pavilion houses the bedrooms, bathrooms, laundry and garage. Direct access from the master to the deck and hot tub add a touch of luxury to this award-winning rural retreat.

» Milestone Homes Kapiti 2021



Custom Design and Build

**VOLUME/GROUP HOUSING
NEW HOME UP TO \$450,000.
REGIONAL BRONZE AWARD**



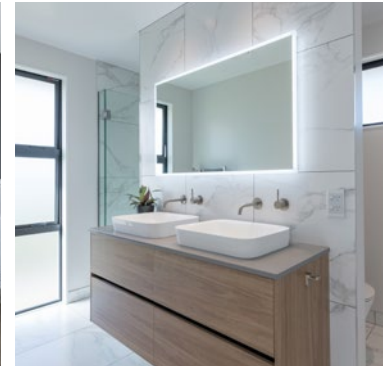
Smart in the city

Located in the heart of Lower Hutt, this award-winning new build is just a short walk to all major amenities. The two-storey layout makes efficient use of space, with laundry discreetly tucked away under the stairs. The ground floor provides open plan living, a smartly dressed-in-black kitchen, guest bathroom and all-day sun. Upstairs, design ingenuity continues with two large bedrooms, a bathroom, and a study that could accommodate an overnight guest. Compact and contemporary, this home is a perfect fit for its urban locale.

Milestone Homes Kapiti

Milestone Homes Kapiti is a proudly locally-owned and operated family business with a long-standing reputation for excellence in the construction industry. Comprised of Luke, Sandra and Cici, the Kapiti team is committed to providing each client with a quality home, value for money and exceptional service. They understand what it takes to build a strong family, and what it takes to build a great home.

» Milestone Homes Nelson Bays 2021



VOLUME/GROUP HOUSING
NEW HOME UP TO \$450,000
REGIONAL GOLD AWARD
REGIONAL CATEGORY WINNER
AND NATIONAL TOP 100 AWARD



Milestone Homes Nelson Bays

Under the grounded leadership of General Manager Adam Hills, the Milestone Homes Nelson Bays team works hard to deliver homes that exude style, provide comfort, and represent solid investments for clients. Winning a Regional Gold / National Top 100 award is point of pride for the team and testament to the time, energy and expertise they pour into every new build.

Heart-warming show stopper

Seen from the street, the vertical cedar and plaster cladding creates a natural, understated feel which belies the sense of luxury found within. Timber, dark cabinetry, LED feature lighting and a walk-in pantry make the kitchen an attractive heart of the home. Another plus: the pantry links directly to the garage, so putting away the groceries is a breeze. Sliding doors from the family and dining areas lead out to a covered alfresco entertaining area, where views to the reserve and Richmond Ranges beyond make the most of the home's exceptional position.

» Milestone Homes Otago 2020



Lifestyle Range: Milestone O7

VOLUME/GROUP HOUSING
NEW HOME UP TO \$450,000
REGIONAL BRONZE AWARD



Crafted to exception

Milestone Homes Otago

Passionate about their local region, the Otago team delights in creating homes of all kinds here – compact, expansive, traditional, contemporary, urban and rural. Whatever the home, their approach is always 100% client-led. They will help you throughout the building journey to make sure all choices and decisions are the right ones for you, so you end up with a quality home you're proud to call your own.

Cedar features, a tile roof and wooden decks give this home a naturally stylish finish. Indoor features include a separate lounge, large open-plan living area, spacious kitchen with scullery, and dining room with sliding doors out to alfresco living. The sleek, high-gloss kitchen not only offers fabulous culinary facilities, it's also a wonderful place for family and friends to gather. Comfortable bedrooms, bathrooms, laundry, ducted heating and an insulated double garage complete the home, which is tailor made for Otago's cooler climate.

From us to you

Now that you've seen what we've achieved for others, let's talk about you! We'd love to hear about your ambitions and aspirations for your own new home.

Ready to begin your journey to a life-changing home? Contact your local Milestone team today.

📞 0800 MILESTONE

🌐 milestonehomes.co.nz



Milestone Homes Matamata

Show Home: 14 Hinerangi Crescent,
Peakedale Estate, Matamata
Darlene 027 285 9251
matamata@milestonehomes.co.nz

Milestone Homes Taranaki

06 757 4483
taranaki@milestonehomes.co.nz

Milestone Homes Kapiti

Luke 021 195 8022
kapiti@milestonehomes.co.nz

Milestone Homes Nelson Bays

Show Home: 52 Summersfield
Boulevard, Richmond
03 543 8663
nelson@milestonehomes.co.nz

Milestone Homes Marlborough

Show Home: 43 Wai Iti Avenue,
Redwoodtown, Blenheim
Hamish 022 097 9446
marlborough@milestonehomes.co.nz

Milestone Homes Canterbury

Sue 021 055 9546
canterbury@milestonehomes.co.nz

Milestone Homes Mid Canterbury

Show Home: 8 Strowan Avenue,
Strowan Fields, Ashburton
Belinda 021 0257 2788
midcanterbury@milestonehomes.co.nz

Milestone Homes Otago

Show Home: 6 Silverdale Place,
Highland Park, Mosgiel
03 489 8111
otago@milestonehomes.co.nz

