



5 KOTUA STREET RAVENSWOOD





EXTERIOR

- APL Double glazed joinery (Obscure glass in bathroom & Toilet areas)
- Colorsteel Endura long-run roofing with matching Colorsteel Fascia, gutter and downpipes
- Firth designer bricks
- James Hardie soffit linings
- Feature entrance door with Digital Entry lock
- Hose tap at front & rear
- Fully insulated sectional Dominator garage door with 2 remote openers
- Vertical Feature cladding

INTERIOR

- Fully insulated home using Pink Batts
- Fully lined garage
- Satin chrome Schlage 'Medio' lever door hardware with rubber end door stops
- Wardrobe organisers in all wardrobes
- Ventilated wire shelving in all cupboards
- Panasonic HiWall VKR Aero 8.0kw Heatpump

KITCHEN

- Professionally designed kitchen by Trends Kitchens
- Soft close Hafele drawer mechanisms & soft close doors
- Non-slip matts in drawers
- Feature gooseneck kitchen mixer
- Under-mounted stainless steel sink
- TriStone bench top
- Tiled splashback
- Walkin Pantry with laminate bench top

LANDSCAPING

- Driveway, vehicle crossing & patio area
- Soft landscaping allowance

APPLIANCES

Fisher & Paykel Package:

- Ceramic cook top – CE604CBX2
- Under bench oven – OB60SC6CEX2
- 900mm range hood – HC90DCXB3
- Dishwasher – DW60FC2X1
- Waste disposal – GD75IA1

BATHROOM / TOILET / LAUNDRY

- Clearlite Millennium 1m x 1m shower in bathroom
- Clearlite Cezanne 1mx1m shower in ensuite
- Clearlite Varo 1520 back to wall bath, with three rows white subway tile splashback
- Clearlite Cashmere wall hung single drawer vanity
- Ideal Standard tapware and slide shower fittings
- Heated towel rails
- Uno CC BTW Soft close Toilet Suite & chrome toilet roll holder
- Robinhood supertub ST3103

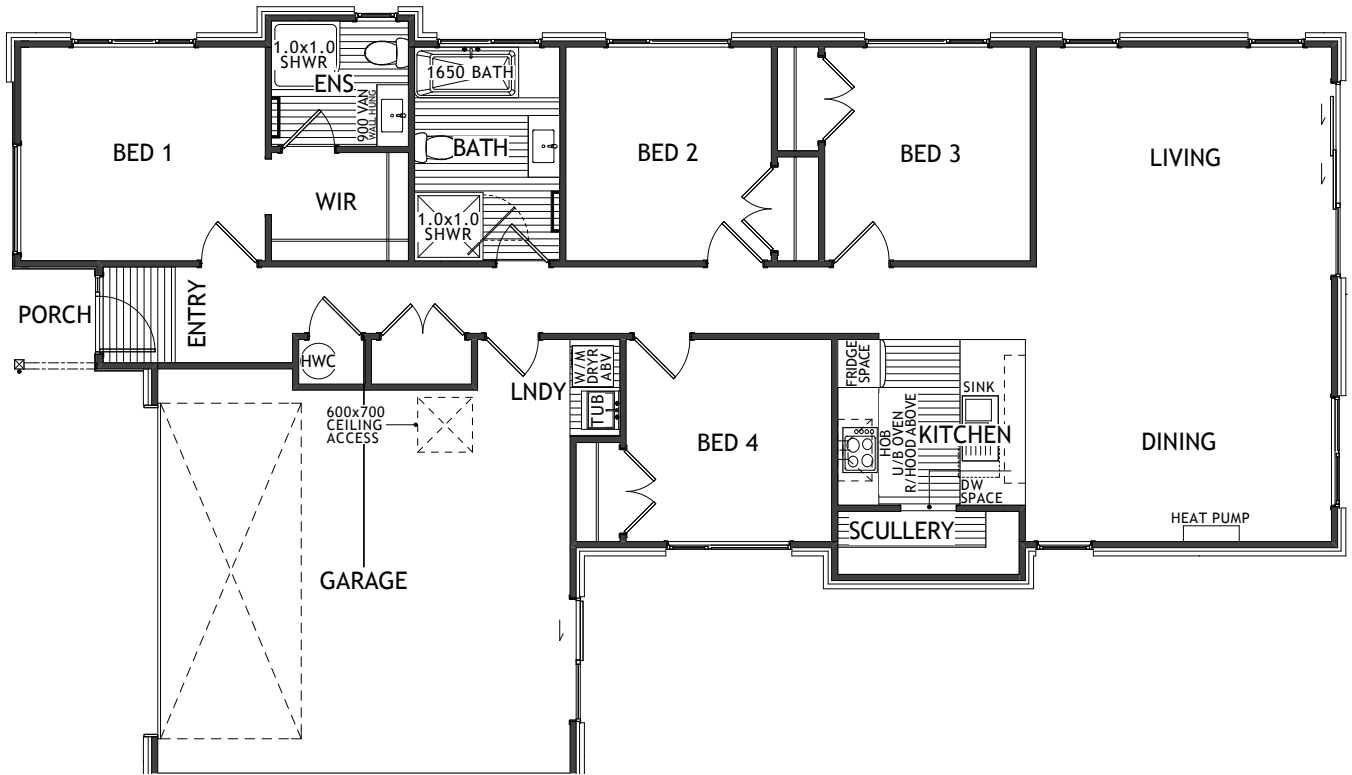
FLOOR COVERINGS

- Belgotex Delta Solution dyed nylon carpet with 11mm underlay
- Belgotex Province vinyl planks laid in entry, kitchen, scullery, bathrooms and toilet

GUARANTEE

- 10 year Standard Master Build Guarantee
- *This includes structure, weather tightness
- 365 day Remedial Defects Policy

Floor Plan



Our plans are drafted by our team of expert designers, who craft each new home using the latest trends and styles.

When building a home, it is important to know you have the support of the right people. All Milestone homes are backed by a Master Build Guarantee. This means that all our homes have been constructed with the best materials available, and have quality workmanship behind them.

- 4 BEDROOM
- 1 BATHROOM
- 1 EN-SUITE
- 2 GARAGE
- TOTAL 160m²
- LAND 439m²

HOUSE & LAND PACKAGE

\$799,000



MILESTONE HOMES CANTERBURY

Wendy Dobbs: 021 735 577 canterbury@milestonehomes.co.nz milestonehomes.co.nz