



Milestone 01



Style 1 Metal tile hip roof with brick cladding



Style 2 Metal tile gable roof with plaster, linea and brick cladding



Style 3 Longrun mono roof with plaster and linea cladding

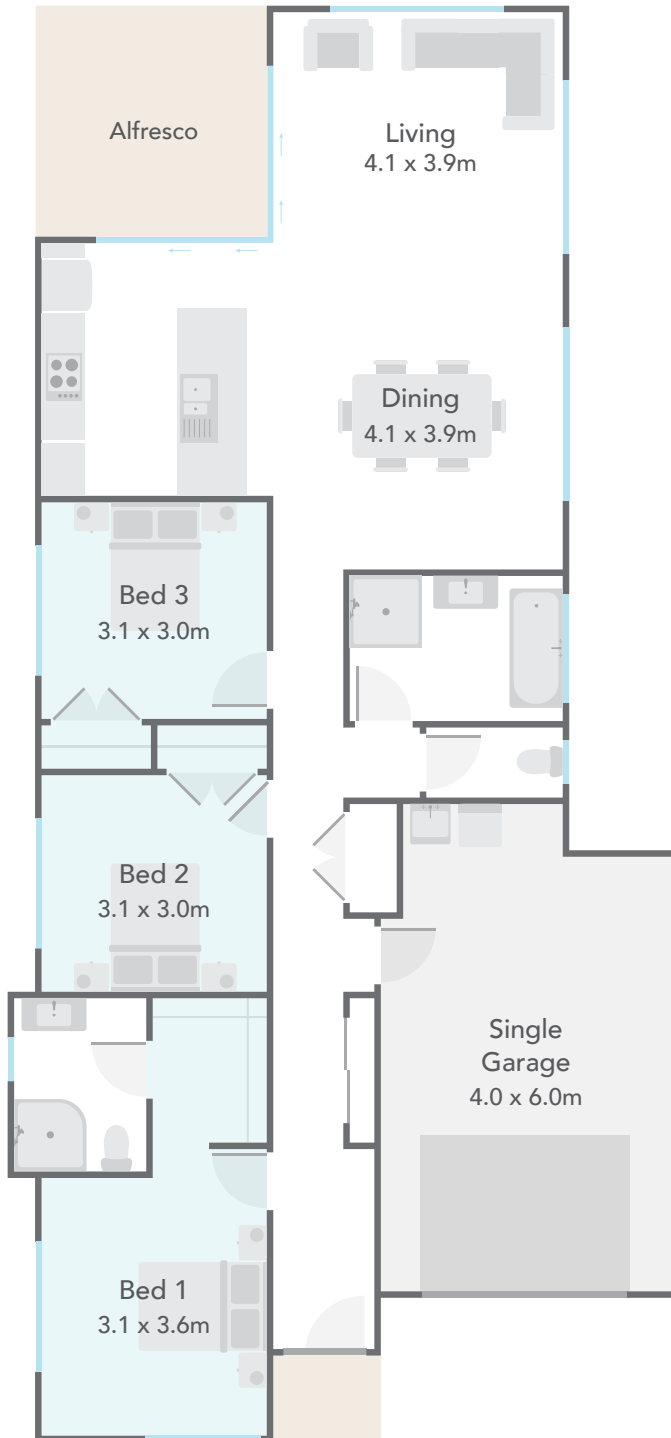


This fantastic yet narrow plan is designed to maximise the sun in all of the living areas providing effortless open plan living whilst allowing everyone to have their own space.

Cornerless sliding doors opening to the expansive alfresco area provides a wow factor not often seen in smaller homes with an extra living space outside.

### Main Features

- Contemporary galley style kitchen.
- Large versatile living area to catch the sun.
- Double bedrooms with full sized wardrobes.
- Master suite with walk-in-robe and ensuite.
- Dedicated laundry nook at the rear of the garage.



## Milestone 01

### Available Smart Options:

- Double Garage
- Kitchen/Dining Swap

Floor Area	141m <sup>2</sup>	Home Width	9.28m	Home Length	19.90m
Living	114.16m <sup>2</sup>	Garage	26.69m <sup>2</sup>	<b>Total Floor Area</b>	<b>140.85m<sup>2</sup></b>

Measurements are reflective of Style 1