



## Milestone 05




 **Style 1** Metal tile hip roof with brick cladding



 **Style 2** Longrun hip roof with plaster cladding



 **Style 3** Longrun gable roof with plaster and linea cladding



This is one of the most popular plans in the range, it is incredibly versatile which suits a huge range of lifestyles and sections.

The home captures the essence of Milestone Homes with its versatility, well thought out and considered design and attractive exterior facades.

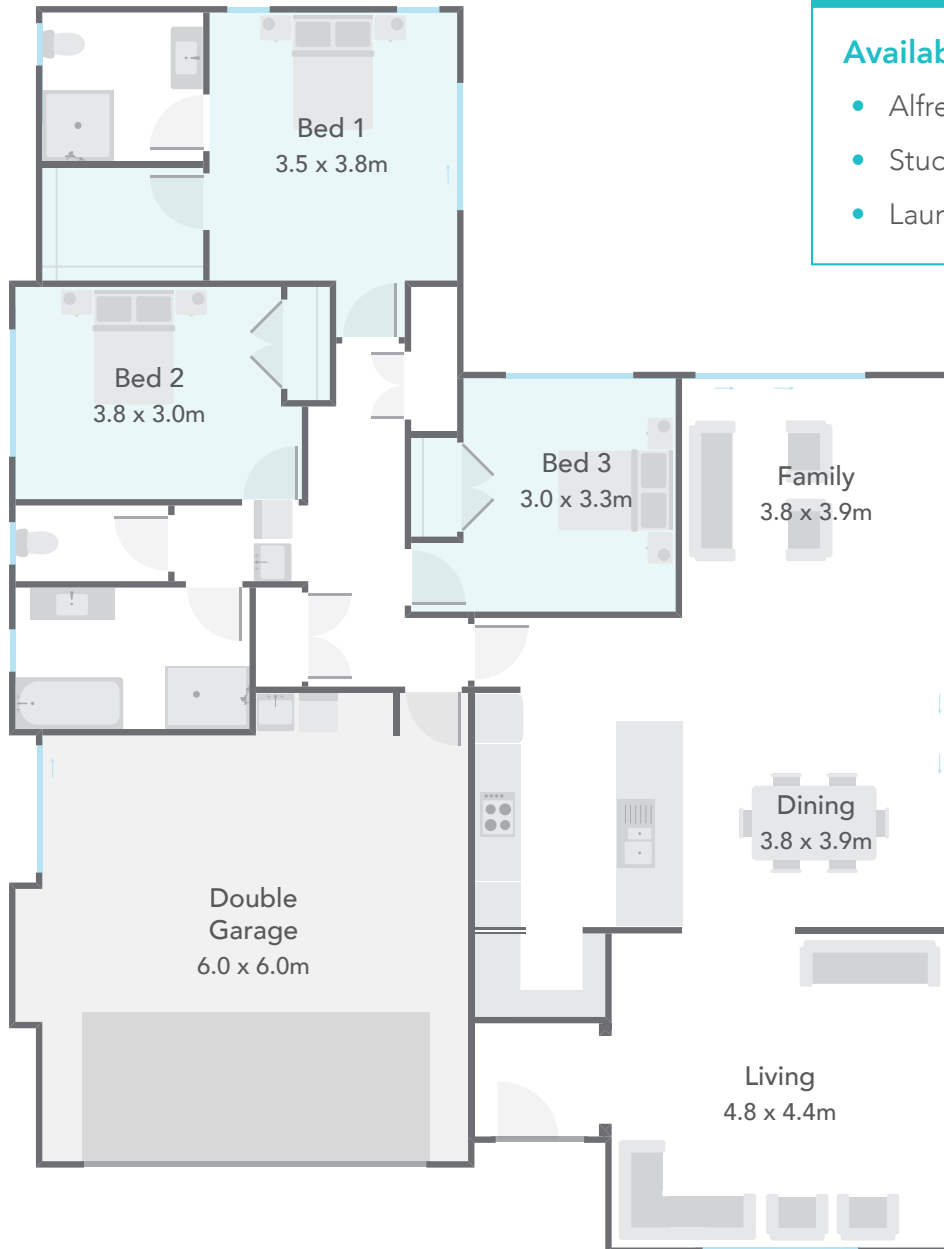
### Main Features

- This proven 3-bedroom home has a central kitchen, with ample storage, space and the luxury of a scullery.
- Living areas flow easily and allows room for everyone to spread out.
- Sliding doors located on two sides of the living areas ensures effortless outside entertaining.
- Master suite with walk-in robe and ensuite.
- Dedicated laundry nook at the rear of the garage.

## Milestone 05

### Available Smart Options:

- Alfresco Area
- Study
- Laundry



Floor Area	186m <sup>2</sup>	Home Width	13.38m	Home Length	17.64m
Living	146.17m <sup>2</sup>	Garage	39.95m <sup>2</sup>	<b>Total Floor Area</b>	<b>186.12m<sup>2</sup></b>

Measurements are reflective of Style 1