




  
milestone

Milestone 09




 **Style 1** Metal tile hip roof with brick and plaster cladding



 **Style 2** Metal tile gable roof with plaster and linea cladding



 **Style 3** Metal tile hip roof with plaster and linea cladding







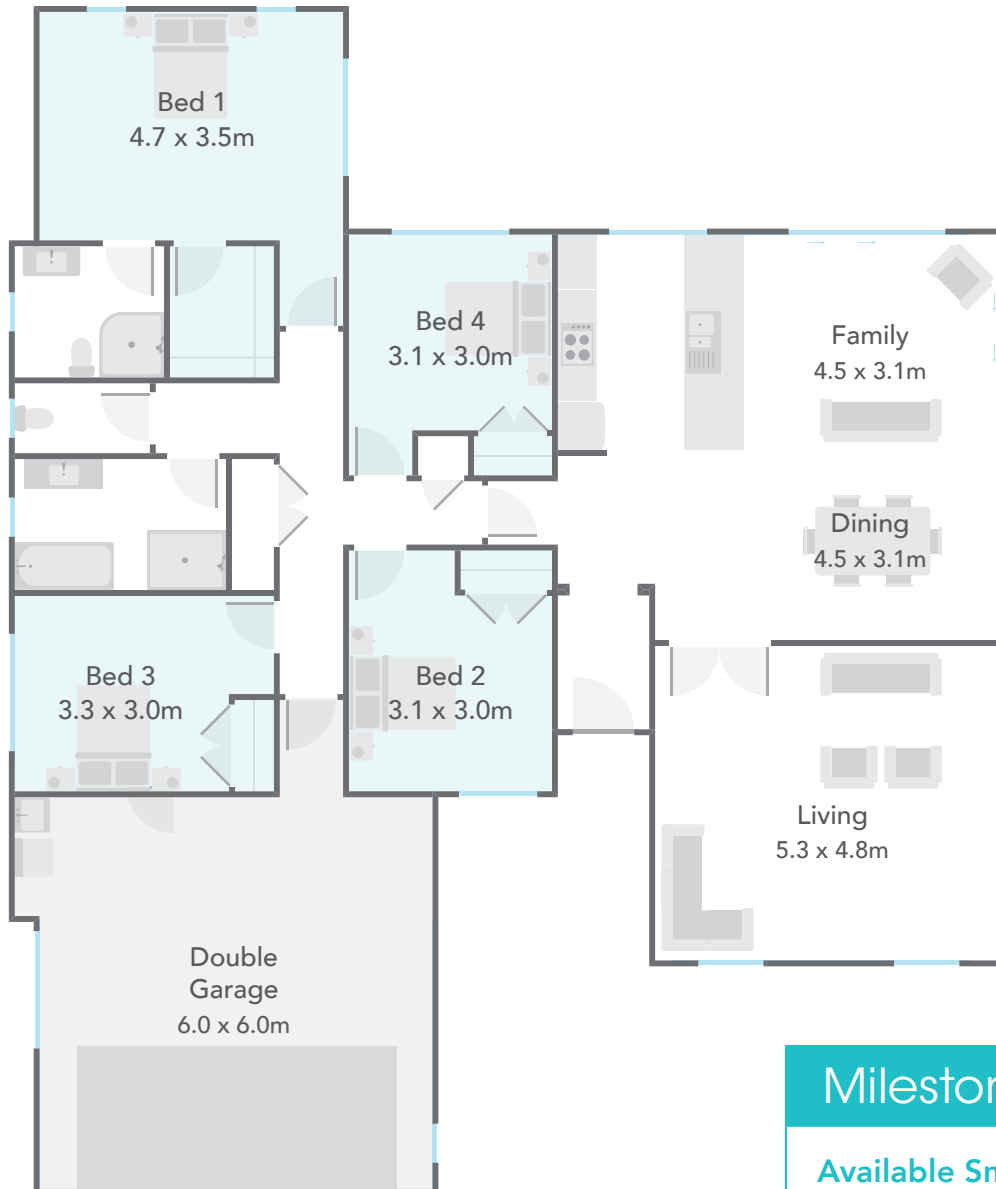
201m<sup>2</sup>      4      2      2      2

This wide 4-bedroom home has a great presence and street appeal and was the first Milestone Homes showhome.

The home shouts family as soon as you walk in with its open plan kitchen and family area and huge separate living space. The sliding doors in the family area make for effortless outdoor living and the sliding window in the kitchen is perfect for passing food out to the BBQ.

**Main Features**

- The 4 generous bedrooms with double wardrobes are all separated from one another.
- The family bathroom and separate toilet is centrally located for convenience.
- The master bedroom is huge with a walk-in-robe and ensuite.
- Options to add a scullery and 5th bedroom.



## Milestone 09

### Available Smart Options:

- 5 Bedroom
- Scullery

Floor Area	201m <sup>2</sup>	Home Width	15.31m	Home Length	18.21m
Living	161.22m <sup>2</sup>	Garage	39.93m <sup>2</sup>	<b>Total Floor Area</b>	<b>201.15m<sup>2</sup></b>

Measurements are reflective of Style 1