



Milestone 12

» lifestyle



 **Style 1:** Metal tile gable roof with plaster and linea cladding



 **Style 2:** Metal tile hip roof with brick and linea cladding



 **Style 3:** Metal tile gable roof with plaster and linea cladding



This incredibly adaptable 3-bedroom home allows you to flow between sophisticated living and relaxed socialising with ease.

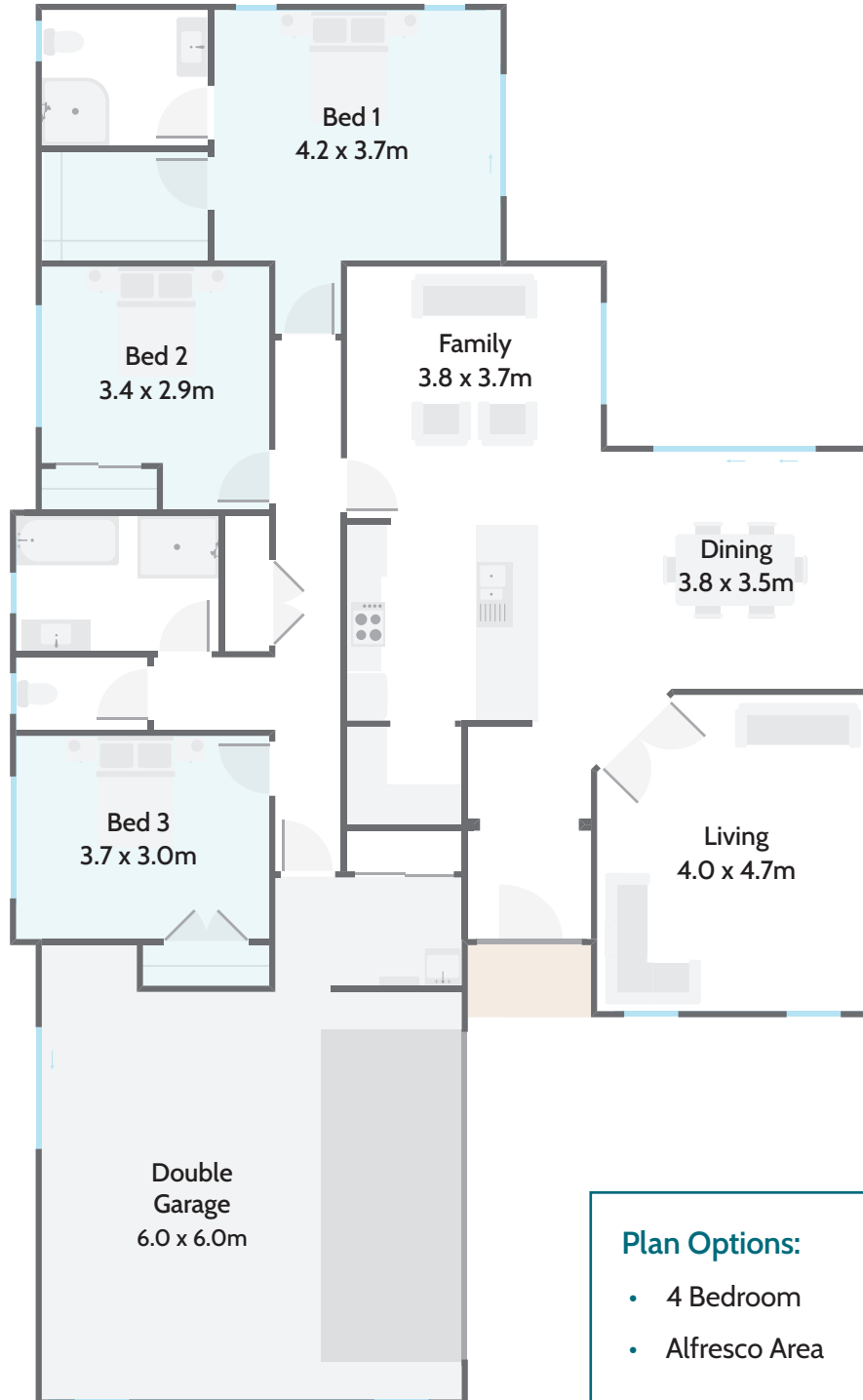
The grand, well-appointed entryway leaves a lasting impression and sets the tone for the rest of this home.

This light-filled plan is carefully designed to capture the sun with an abundance of windows making this a radiant and airy home where everything feels connected with space for everyone.

Main Features:

- A modern kitchen, 3 bedrooms and two sunny living areas.
- Walk through laundry, 2 bathrooms and easy indoor/outdoor flow for entertaining.
- Double garage with a dedicated workshop nook.
- Options to add an alfresco area and a 4th bedroom available.





Plan Options:

- 4 Bedroom
- Alfresco Area

Floor Area	191m ²	Home Width	12.77m	Home Length	20.70m
Living Area	146.35m ²	Garage Area	44.76m ²	Total Floor Area	191.11m²

Measurements are reflective of Style 1

