



Milestone 16



 **Style 1** Metal tile hip roof with plaster cladding



 **Style 2** Longrun gable roof with plaster and linea cladding



 **Style 3** Metal tile gable roof with plaster and linea cladding



166m²

3

1

2

2

The perfect house for a south entry section, this open plan home meets all of the requirements of modern living.

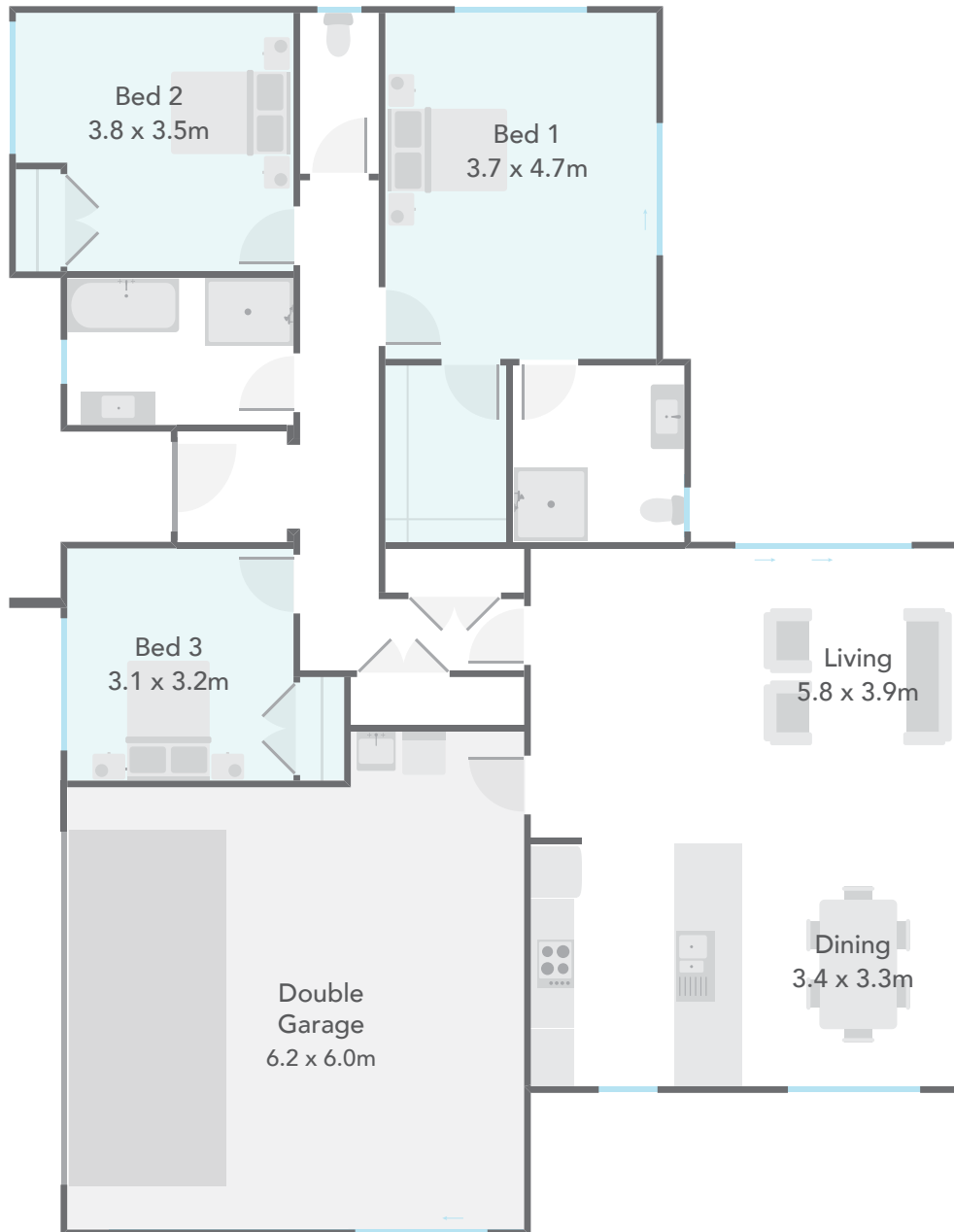
Central is the large living and dining areas separated by a stylish and generous galley kitchen. The living area has the added bonus of being north facing, making the most of the sun throughout the day.

This delightful home boasts 3 generous bedrooms including a vast master which enjoys a well sized walk-in-robe and ensuite.

An array of features are included making this cleverly designed, sunny and stylish home an easy choice.

Main Features

- Double garage with laundry nook.
- Lots of functional storage areas.
- Plenty of space for everyone.



Floor Area	166m ²	Home Width	16.74m	Home Length	13.00m
Living	125.65m ²	Garage	40.31m ²	Total Floor Area	165.96m²

Measurements are reflective of Style 1