




 milestone

Milestone 24




 **Style 1** Metal tile hip roof with plaster and brick cladding



 **Style 2** Metal tile gable roof with plaster and linea cladding



 **Style 3** Metal tile gable roof with plaster and linea cladding

- 
185m²
- 
4
- 
2
- 
2
- 
2

This smartly designed, two-storey home offers low maintenance living at its best!

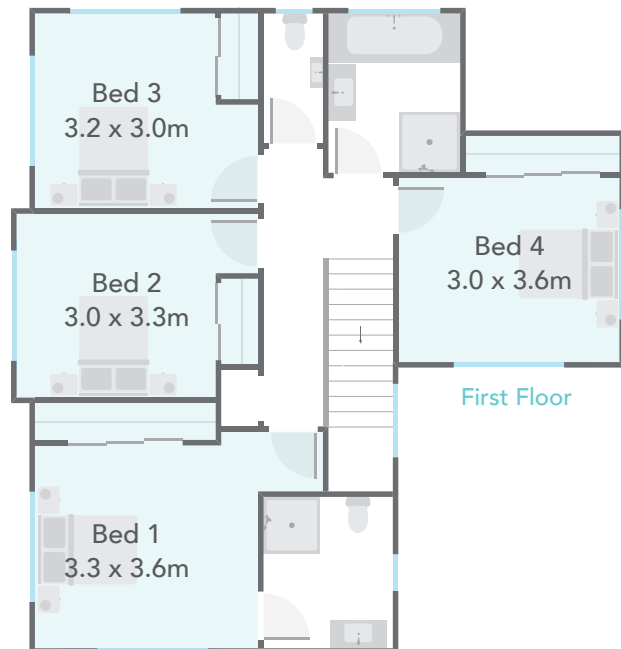
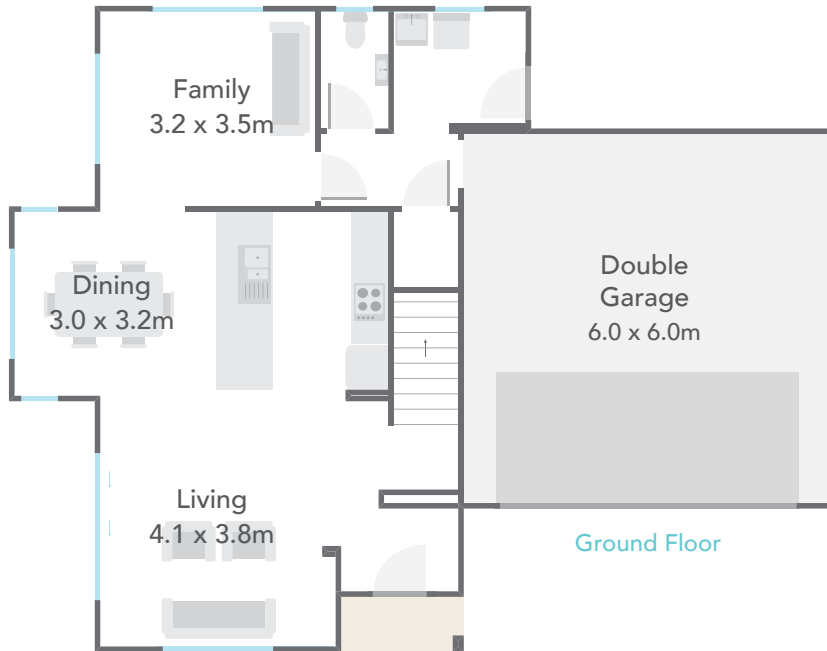
Within this open plan is a beautifully styled kitchen and two centrally located living areas that interconnect to outside, providing that perfect flow for entertaining.

All 4 double bedrooms, two with super-sized wardrobes, an extra bathroom, toilet and extra storage are situated upstairs, with the spacious master hosting an ensuite.

This home features a sizeable double garage, 3rd toilet with hand basin and a separate laundry.

Main Features

- Ample storage for everyone.
- Offers a compact footprint with lots of flexibility for smaller sites.
- Option for an alfresco area and rumpus room available.



Milestone 24

Available Smart Options:

- Alfresco Area
- Rumpus

Floor Area	185m ²	Home Width	10.54m	Home Length	13.53m
Living	147.11m ²	Garage	37.79m ²	Total Floor Area	184.90m²

Measurements are reflective of Style 1