

» METRO RANGE Kaikōura



The Metro range features 10 contemporary home designs created by Milestone Homes to deliver modern living solutions for smaller urban sections. Compact yet packed with new-home comforts, Metro plans are a go-to for professional couples, young families and empty-nesters looking for relaxed, easy-care living.



Kaikōura

A smaller section should not be a barrier to building a stylish new home to fit the lifestyle you want. With an efficiently designed compact layout, the Kaikōura home plan delivers on comfortable, convenient living for young families, first home buyers or those looking to downsize and simplify.

Comprising four bedrooms, two bathrooms and casual open plan living, the Kaikōura floorplan creates a comfortable, contemporary home that's a great fit for a narrower section.

Highlights:

- Four generous double bedrooms
- Master bedroom with ensuite and walk-in wardrobe
- Open plan living opening to the outdoors
- Family bathroom plus separate toilet
- Spacious internal access garaging.

139m²

Bedrooms

Bathrooms

Living / Dining

Garage

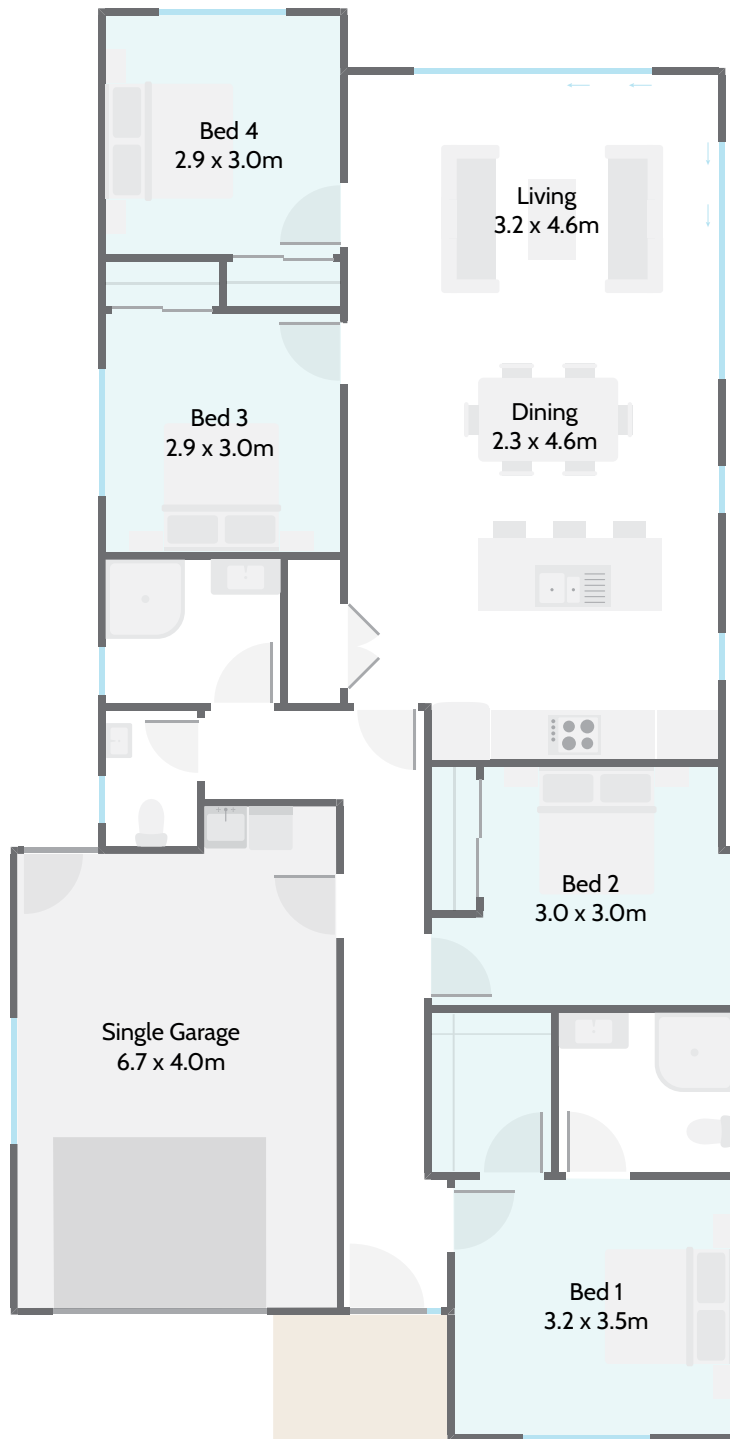


📞 0800 MILESTONE
🌐 milestonehomes.co.nz

» METRO RANGE
Kaikōura



Home Width 9.20m	Home Length 18.05m	Living Area 114.73m ²	Garage Area 25.23m ²	Total Floor Area 139.96m ²
----------------------------	------------------------------	--	---	---



139m²



Bedrooms



Bathrooms



Living / Dining



Garage



0800 MILESTONE
milestonehomes.co.nz