

» COUNTRY RANGE Tekapo



The Country range features six spacious home designs created by Milestone Homes to offer comfortable, modern living with proportions perfectly suited to a rural setting, lifestyle block or larger section size. Generous and designed to connect with the outdoors, the Country range are a top pick for large families or lifestylers seeking space and a touch of luxury.



Tekapo

Creating the perfect environment to enjoy your natural surroundings, the Tekapo home plan from Milestone promises a luxury lifestyle while catering for the practicalities of life. The unique design of the family room allows for all-day sunshine and connects to an expansive outdoor entertaining area to enjoy those long summer evenings.

Comprising four generous bedrooms, two bathrooms, spacious interconnected living areas with a separate lounge and an office, the Tekapo floorplan delivers a family-friendly layout that maximises comfort and convenience.

Highlights:

- Four generous double bedrooms
- Master bedroom with ensuite and walk-in wardrobe
- Separate lounge
- Work-from-home office
- Sheltered alfresco area
- Fully insulated double internal access garage.

293m²



Bedrooms



Bathrooms



Living / Dining



Garage



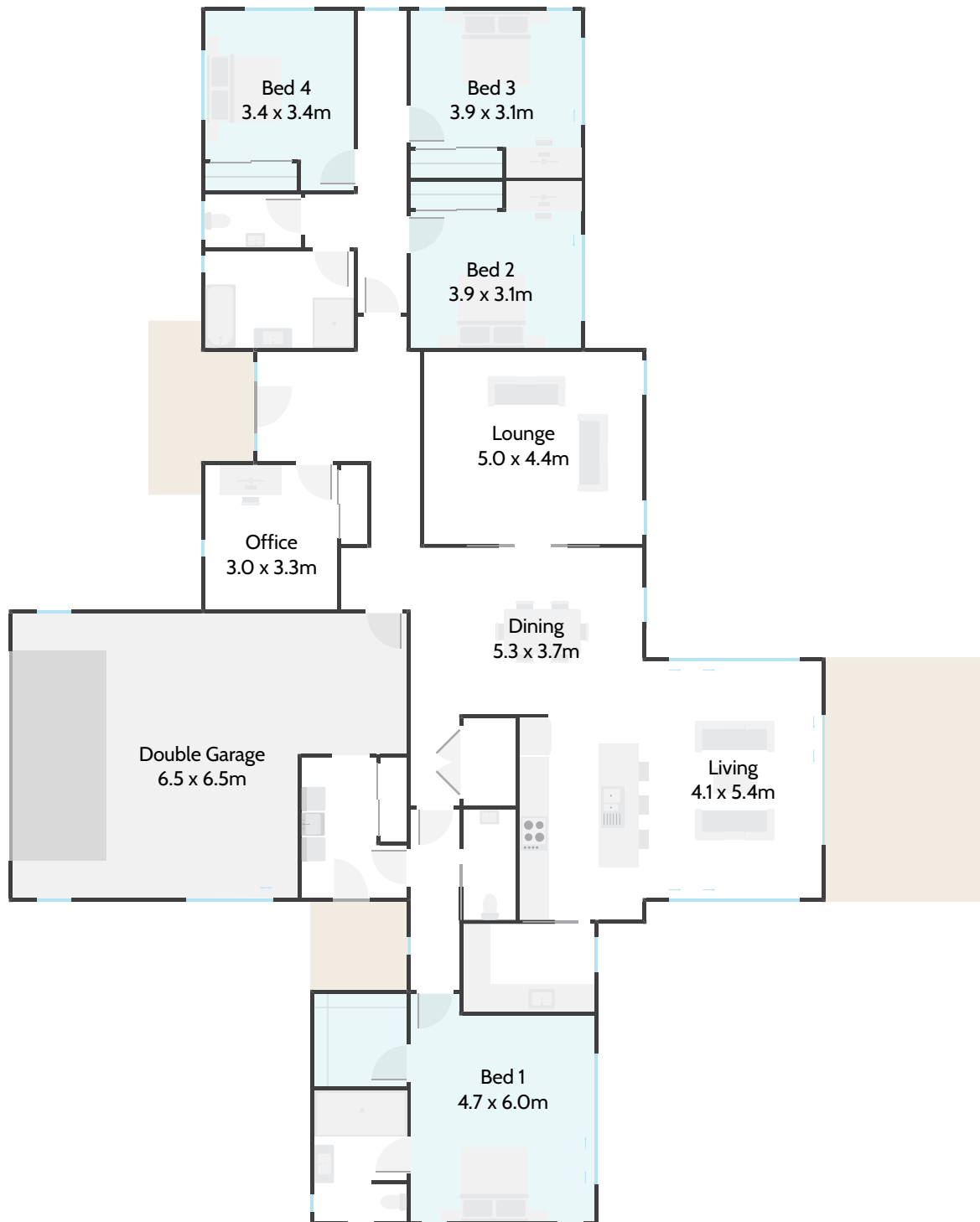
📞 0800 MILESTONE
🌐 milestonehomes.co.nz

» COUNTRY RANGE

Tekapo



Home Width 27.90m	Home Length 22.00m	Living Area 239.29m ²	Garage Area 53.24m ²	Total Floor Area 292.53m ²
-----------------------------	------------------------------	--	---	---



293m²



Bedrooms



Bathrooms



Living / Dining



Garage



0800 MILESTONE
milestonehomes.co.nz