

## » COUNTRY RANGE Wakatipu



The Country range features six spacious home designs created by Milestone Homes to offer comfortable, modern living with proportions perfectly suited to a rural setting, lifestyle block or larger section size. Generous and designed to connect with the outdoors, the Country range are a top pick for large families or lifestylers seeking space and a touch of luxury.



## Wakatipu

Teenagers, house guests or extended family will enjoy their own private retreat when you choose the generously proportioned Wakatipu home plan from Milestone Homes. Open plan family living is complemented by the separate cosy lounge perfect for chilly evenings or movie nights.

Comprising four generous bedrooms including guest suite, three bathrooms and open plan living areas plus a separate lounge and office nook, your dreams of a luxury lifestyle come alive with the Wakatipu floorplan.

### Highlights:

- Four generous double bedrooms
- Guest suite with private ensuite
- Separate lounge with fireplace
- Work-from-home office
- Sheltered alfresco area
- Fully insulated double internal access garage.

295m<sup>2</sup>



Bedrooms



Bathrooms



Living / Dining



Garage



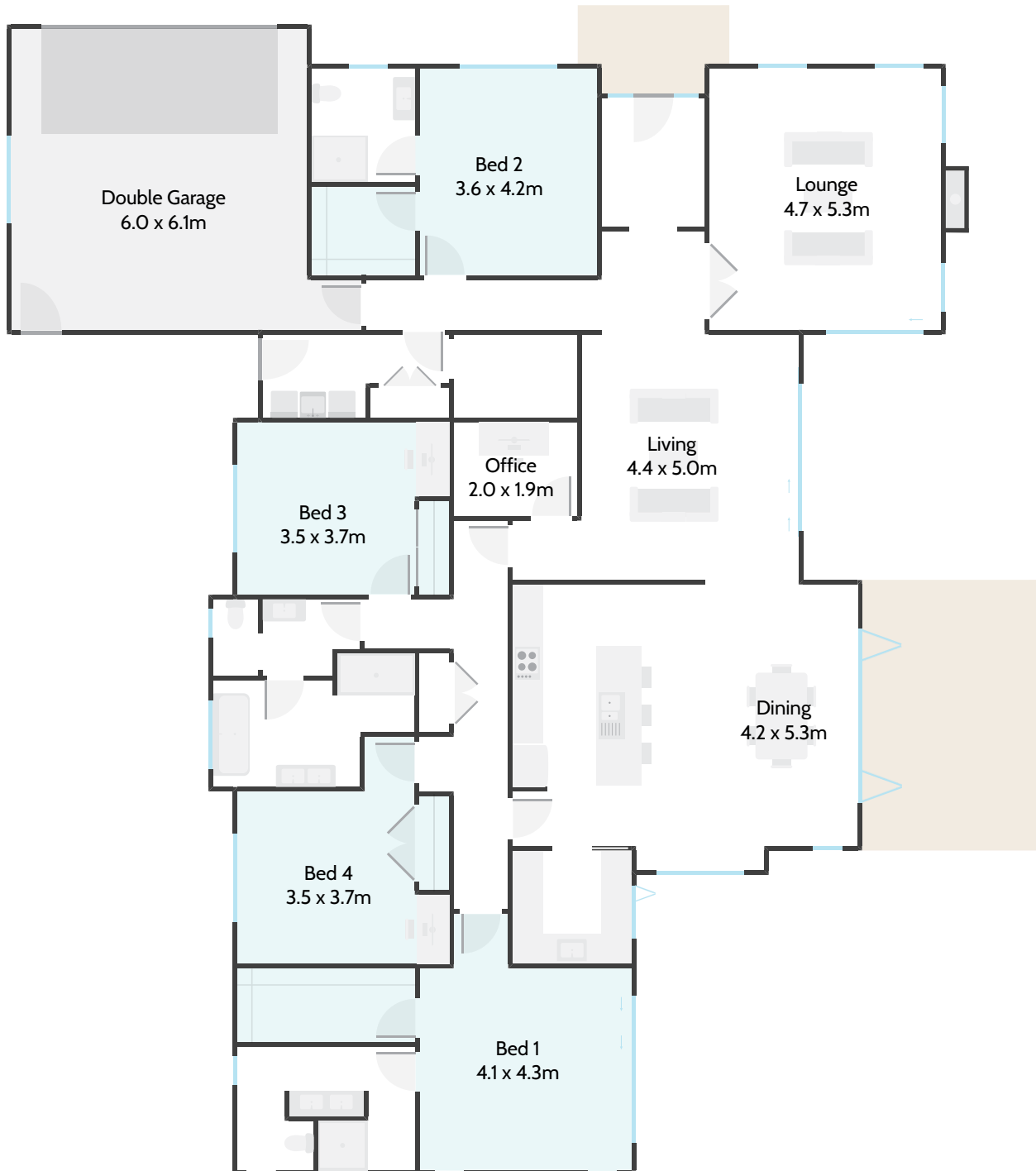
📞 0800 MILESTONE  
🌐 [milestonehomes.co.nz](https://milestonehomes.co.nz)

# » COUNTRY RANGE

## Wakatipu



<b>Home Width</b> 21.00m	<b>Home Length</b> 23.80m	<b>Living Area</b> 256.00m <sup>2</sup>	<b>Garage Area</b> 38.77m <sup>2</sup>	<b>Total Floor Area</b> 294.77m <sup>2</sup>
-----------------------------	------------------------------	--	---	---



295m<sup>2</sup>

Bedrooms

Bathrooms

Living / Dining

Garage



0800 MILESTONE  
milestonehomes.co.nz