

» LIFESTYLE RANGE  
Oreti



Style 1: Metal tile gable roof with plaster and Linea cladding



Style 2: Metal tile hip roof with brick and Linea cladding



Style 3: Metal tile gable roof with plaster and Linea cladding

The Lifestyle range features 30 stylish home designs created by Milestone Homes to deliver comfortable, quality homes ideal for modern living. Functional and flexible, the cleverly designed Lifestyle range has a proven track record of happy homeowners from professional couples to large families.

## Oreti

This incredibly adaptable three-bedroom home allows you to flow between sophisticated living and relaxed socialising with ease.

The grand, well-appointed entryway leaves a lasting impression and sets the tone for the rest of this home.

This light-filled plan is carefully designed to capture the sun with an abundance of windows making this a radiant and airy home where everything feels connected with space for everyone.

### Highlights:

- A modern kitchen, three bedrooms and two sunny living areas
- Walk through laundry, two bathrooms and easy indoor/outdoor flow for entertaining
- Double garage with a dedicated workshop nook
- Fourth bedroom and alfresco area options available.

191m<sup>2</sup>



Bedrooms



Bathrooms



Living / Dining



Garage



0800 MILESTONE  
milestonehomes.co.nz

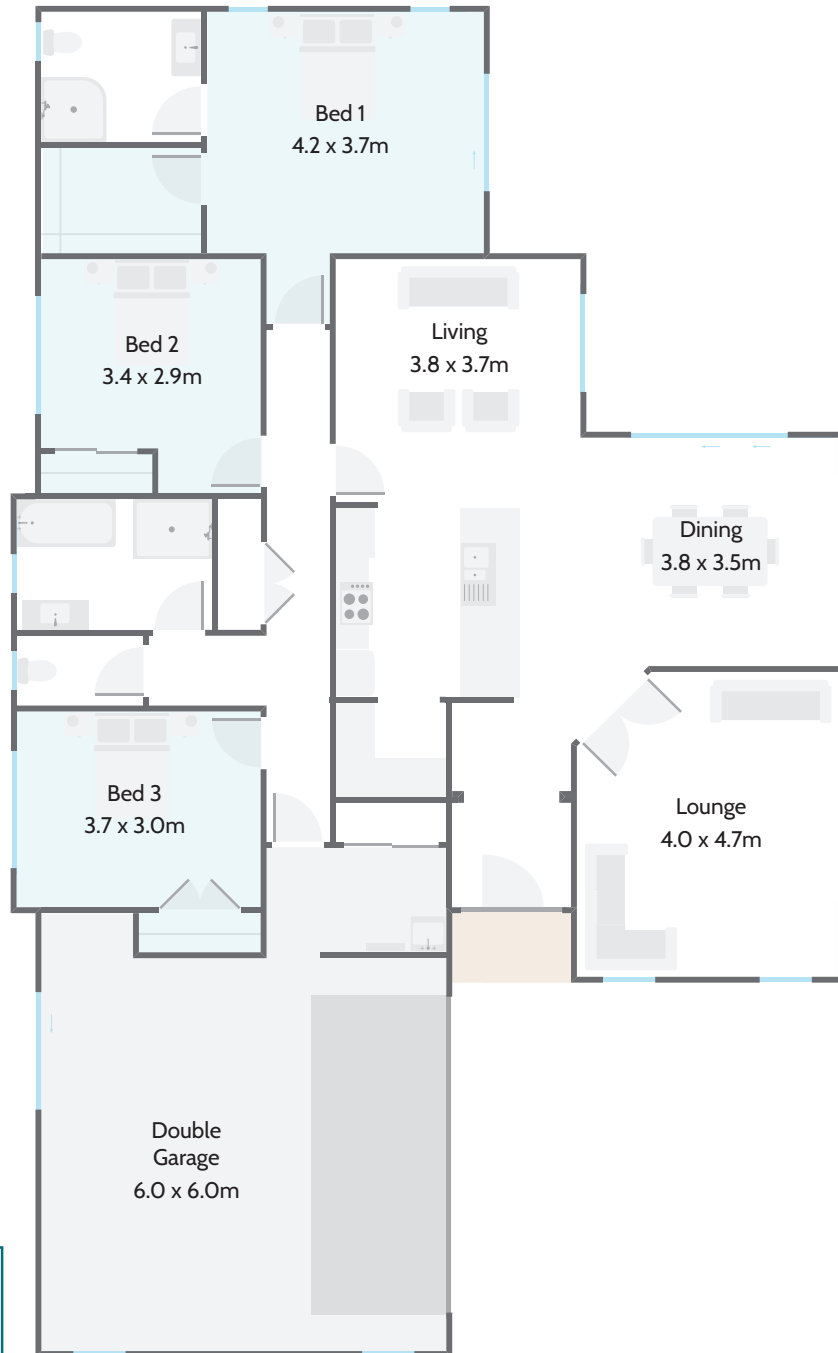
# » LIFESTYLE RANGE

## Oreti



<b>Home Width</b> 12.77m	<b>Home Length</b> 20.70m	<b>Living Area</b> 146.35m <sup>2</sup>	<b>Garage Area</b> 44.76m <sup>2</sup>	<b>Total Floor Area</b> 191.11m <sup>2</sup>
-----------------------------	------------------------------	--	---	---

Measurements are reflective of Style 1



### Plan Options:

- 4 Bedroom
- Alfresco Area

191m<sup>2</sup>



Bedrooms



Bathrooms



Living / Dining



Garage



0800 MILESTONE  
milestonehomes.co.nz