



SHOW HOME

1 Peakedale Drive, Peakedale Estate, Matamata

205m²
4 bdrm



MS 11



Here's a quality family home that ticks all the boxes with effortless living throughout. With two stunning living areas, four spacious bedrooms and two bathrooms, everyone can enjoy their own space.

This purpose designed family home encapsulates the 'Smart' principles that Milestone Homes are renowned for: smart design, smart living and all for a smarter price.

BEDROOM
4



BATHROOM
1



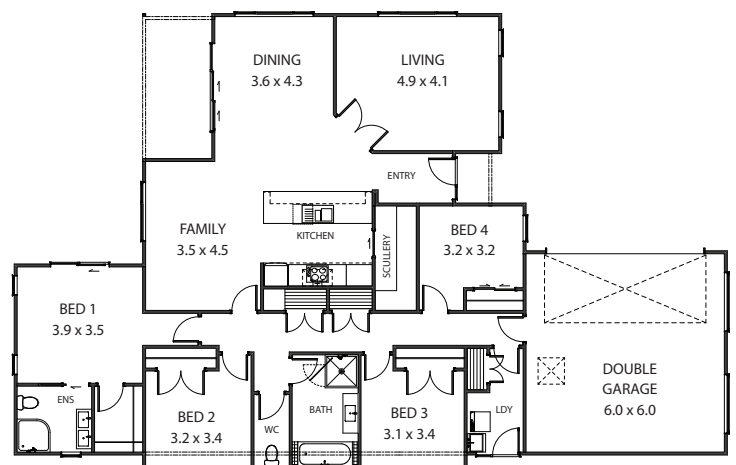
ENSUITE
1



LIVING
2



GARAGE
2



Sales enquiries:

Abby Payze

P 027 512 5701

E abby.payze@milestonehomes.co.nz



Milestone Homes Matamata
1 Peakedale Drive, Matamata

0800 MILESTONE
milestonehomes.co.nz


milestone
The smarter plan for a new home

TALK TO US ABOUT SMART HOUSE AND LAND PACKAGES AVAILABLE NOW

Have peace of mind knowing that what we display in our show home is included in our house and land packages

UNDERTAKINGS

- Locally owned – nationally supported
- Comprehensive aftercare package including remedial defects assurance
- Building consents, BRANZ and MBIE levies
- Interior and exterior professional clean
- Recycling of construction waste programme
- Preferred local suppliers and sub-trades

STRUCTURAL WORKS

- Engineer designed raft concrete floor system

SITE WORKS

- Exposed aggregate or coloured concrete driveway
- Timber fencing on side and rear boundaries
- Sustainably sourced premium timber decking
- Hydroseed lawn
- Clothesline

EXTERIOR

- Carbon-neutral, treated timber frames and trusses
- Double glazed aluminum joinery with 40mm internal architraves
- Above code Insulation to exterior walls and ceilings (excluding garage)
- APL Latitude Entry door with electronic digital entry lock
- Flat panel premium insulated garage door with automatic opener and 2 remotes
- Hose taps to front and rear of house (3)
- Gerard Corona Shake Metal tiled roof
- Colorsteel fascia, spouting and downpipes
- Natural clay fired bricks with James Hardie Premium Weatherboard

INTERIOR LININGS

- Wall 10mm Winstone GIB Board
- Ceilings 13mm Winstone GIB Board
- Wet Areas: Winstone Aqualine GIB Board
- 75mm GIB Cove Cornice
- 90mm skirtings
- Feature tongue and groove walls to Entry and Master Bedroom
- Feature wallpaper to Dining Room

EXECUTIVE KITCHEN

- Professionally designed Kitchen
- TriStone benchtop
- Undermounted double bowl stainless steel sink including waste disposal unit and air switch
- ION kitchen mixer with gunmetal finish
- Walk-in pantry fitted out with matching coloured shelves and benchtop
- Soft close draws and doors
- Feature Bulkhead
- Fisher and Paykel contemporary appliance package
- Full width feature glass splash back to cook top bench area

INTERIORS

- Flush panel doors with 40mm architraves to match windows
- Schlage Medio door furniture
- Built in shelving furniture to all Bedroom Wardrobes

BATHROOMS

- Premium Lifestyle tiled wall shower enclosure - Ensuite
- Dumawall Plus Wall Tiles to wet walls including shower enclosure
- Clearlite Cashmere double bowl vanity with vitreous china top - Ensuite
- Premium Athena Contro Centre freestanding bath - Main bathroom
- Clearlite Millennium showers with flat wall liners - Main bathroom
- Ideal Standard tapware and slide shower fittings
- Clearlite Cashmere single bowl vanity with vitreous china top – Main Bathroom
- Ideal Standard Cygnet Neu Toilet Suite with soft close seat
- St Michel mirrors with polished edges
- Heated towel warmers to Ensuite and Bathroom

ELECTRICAL

- Audio visual communications hub to walk in pantry
- LED low energy recessed downlights
- HPM electrical switch components
- Inline extractor fan to Bathroom and Ensuite
- Data, phone, TV outlets and wireless broadband ready
- Structural wiring for a 3 camera security system (see below for option)

FLOOR COVERINGS

- Commercial vinyl planking to Entry, Kitchen and wet areas
- Norman Ellison Commodore extra heavy-duty solution dyed nylon cut pile carpet on luxury 11mm foam underlay

DECORATING

- Washable Resene three coat premium paint system
- Completed interior design by Yellowfox

HEATING

- Panasonic wall mounted heat pump located in living area
- Heat transfer system to bedroom areas from living area
- Compliant with Healthy Home Standards (Residential Tenancies Regulations 2019)

OPTIONAL ADDITIONS AVAILABLE

- Landscaping
- Drapes and blinds
- Exterior lighting and power
- Garage carpet
- Letterbox
- Alarm and video security system
- Bathroom heating

Show home art by Kodak and Black - blackstuff.co.nz

Milestone Homes reserves the right to amend the schedule from time to time including works and materials to an equal, or superior standard specified.

Sales enquiries: Abby Payze P 027 512 5701 E abby.payze@milestonehomes.co.nz

Milestone Homes Matamata

v3_0421