

» LIFESTYLE RANGE Milestone 21



🏠 Style 1: Metal tile gable roof with Axon and plaster cladding



🏠 Style 2: Metal tile hip roof with Axon and brick cladding



🏠 Style 3: Longrun mono roof with Linea and cedar cladding

The Lifestyle range features 30 stylish home designs created by Milestone Homes to deliver comfortable, quality homes ideal for modern living. Functional and flexible, the cleverly designed Lifestyle range has a proven track record of happy homeowners from professional couples to large families.

Milestone 21

This contemporary home plan simply shouts modern family living. With the spacious kitchen at its heart, interconnected living and dining areas flow seamlessly to the outdoors.

Generous bedrooms, a luxurious master suite, and a family bathroom plus separate laundry, cater perfectly to the busy household.

Highlights:

- Contemporary kitchen with butler's pantry
- Spacious interconnected living areas
- Private master suite with walk-in robe
- Double internal access garage.

217m²



Bedrooms



Bathrooms



Living / Dining



Garage



📞 0800 MILESTONE
🌐 milestonehomes.co.nz

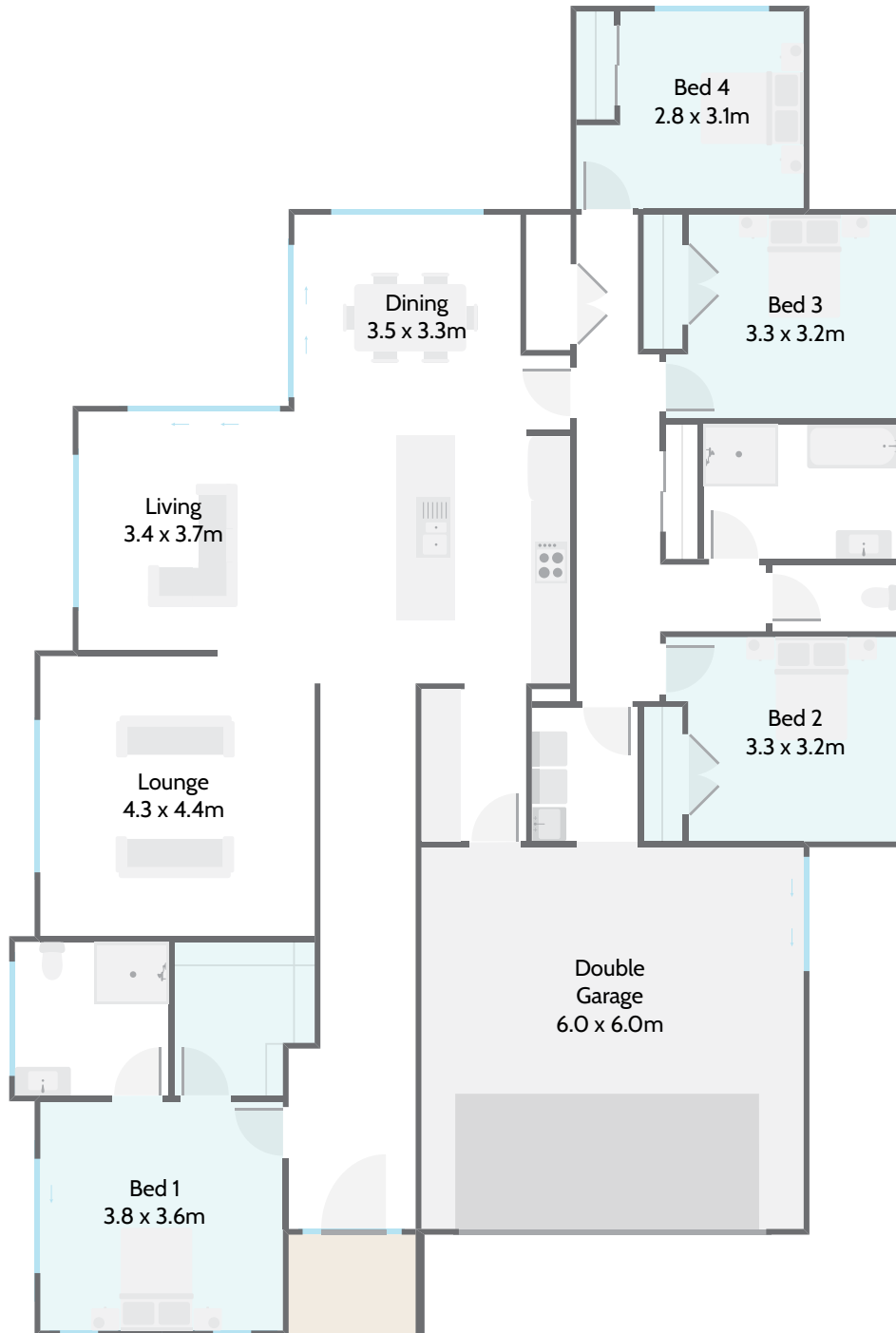
» LIFESTYLE RANGE

Milestone 21



Home Width 14.10m	Home Length 20.95m	Living Area 176.13m ²	Garage Area 40.96m ²	Total Floor Area 217.09m ²
-----------------------------	------------------------------	--	---	---

Measurements are reflective of Style 1



217m²



Bedrooms



Bathrooms



Living / Dining



Garage



0800 MILESTONE
milestonehomes.co.nz