



Milestone 16

164m² | 3 bdrm

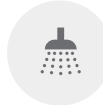
With generous open plan living this three bedroom home meets all the requirements of today's modern home. Two bathrooms and a double garage make this cleverly designed home an easy choice.



3



1



2



STYLE 1



STYLE 2



STYLE 3



Milestone 16

164m² | 3 bdrm



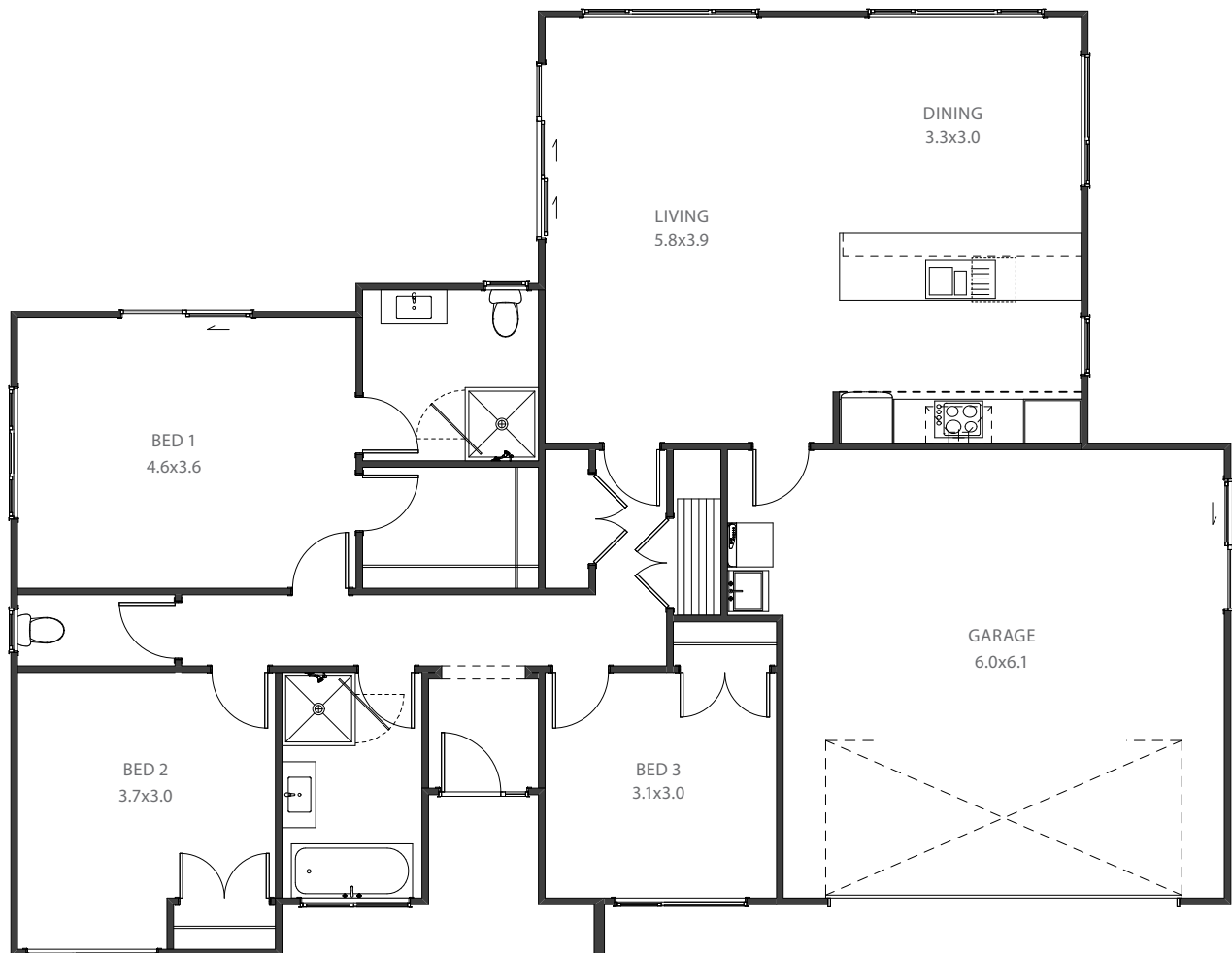
3



1



2



Living	124.08m ²
--------	----------------------

Garage	39.70m ²
--------	---------------------

Total	163.78m²
--------------	----------------------------

Home Width	12.90m
------------	--------

Home Length	16.65m
-------------	--------