



Milestone 20

186m² | 4 bdrm

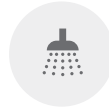
This spacious four bedroom home offers great open plan family living. The multiple lounge and dining allow smart furniture placement to suit your family's changing needs and lifestyle.



4



2



2



STYLE 1



STYLE 2



STYLE 3



Milestone 20

186m² | 4 bdrm



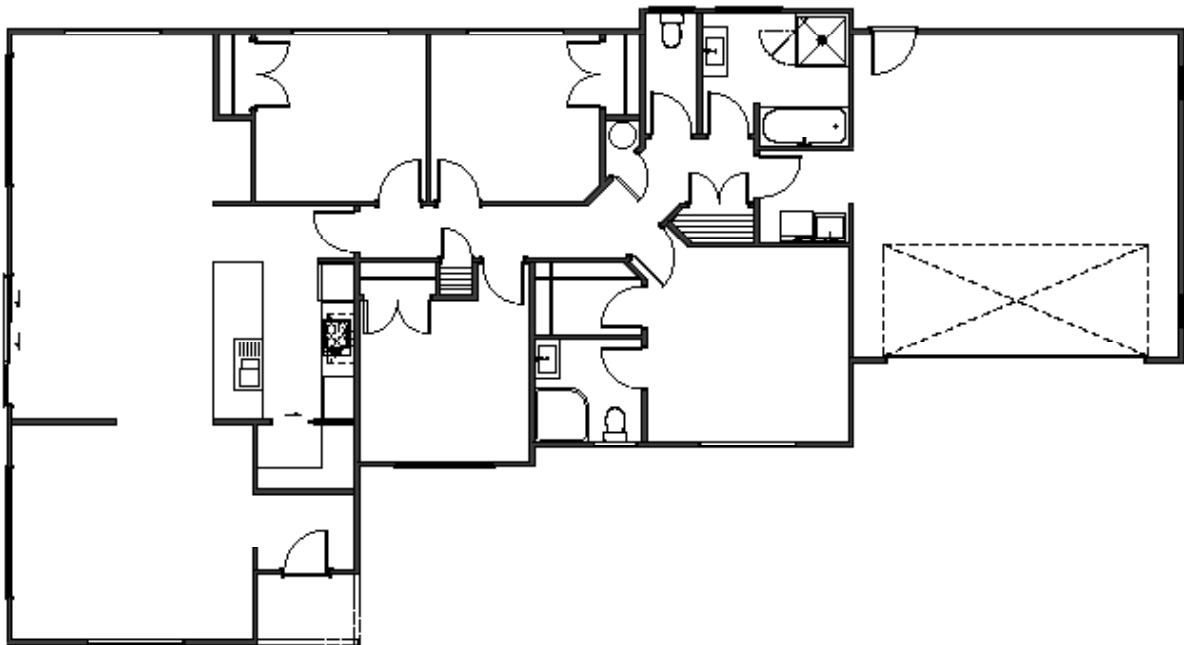
4



2



2



Living 145.86m²

Garage 40.87m²

Total 186.73m²

Home Width 11.80m

Home Length 21.80m

Measurements are reflective of Style 1.

milestonehomes.co.nz

milestone
The smarter plan for a new home